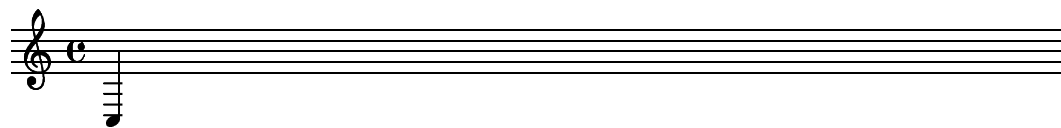
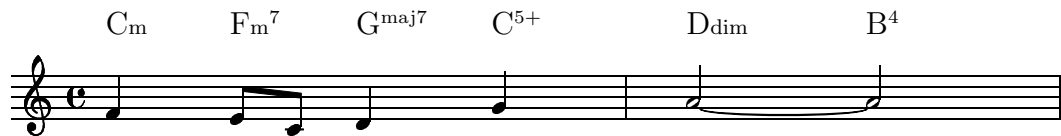


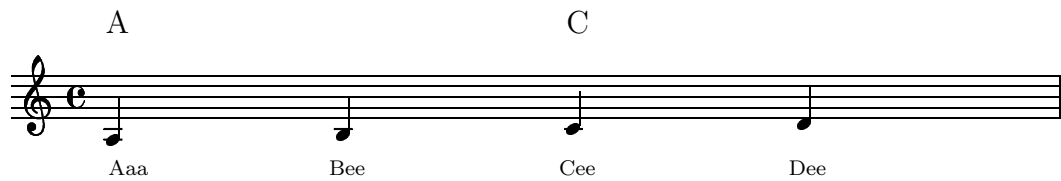
The standard header that ought to be above a file. `‘/home/inger/RPM/BUILD/lilypond-1.6.6/input/temp`



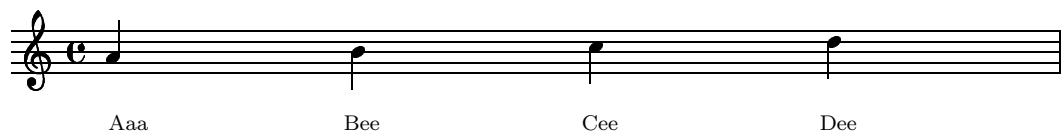
lead sheet format: chords with melody. `‘/home/inger/RPM/BUILD/lilypond-1.6.6/input/template/melo`



popsong format: chords, melody and lyrics. `‘/home/inger/RPM/BUILD/lilypond-1.6.6/input/template/`



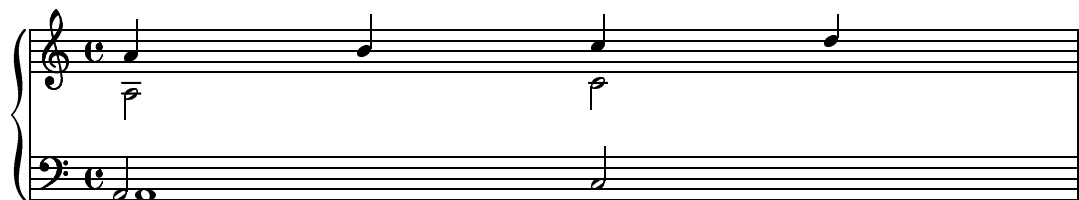
Melody and lyrics. `‘/home/inger/RPM/BUILD/lilypond-1.6.6/input/template/melody-lyrics.ly’:`



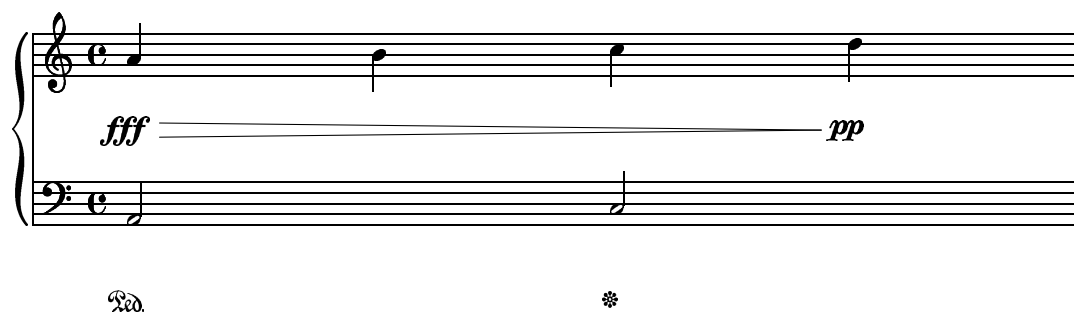
Only a melody. `‘/home/inger/RPM/BUILD/lilypond-1.6.6/input/template/melody.ly’:`



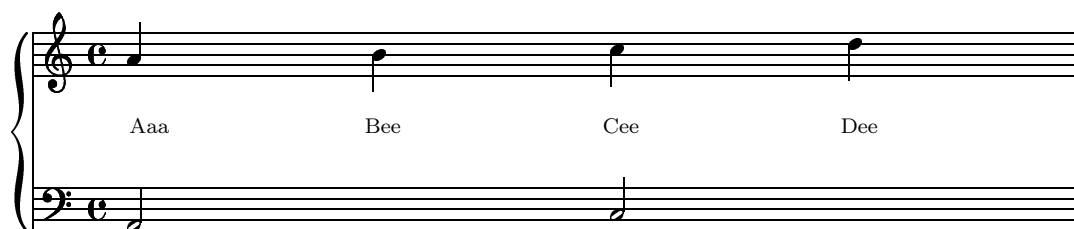
Polyphonic piano music `‘/home/inger/RPM/BUILD/lilypond-1.6.6/input/template/piano-4-voices.ly’:`



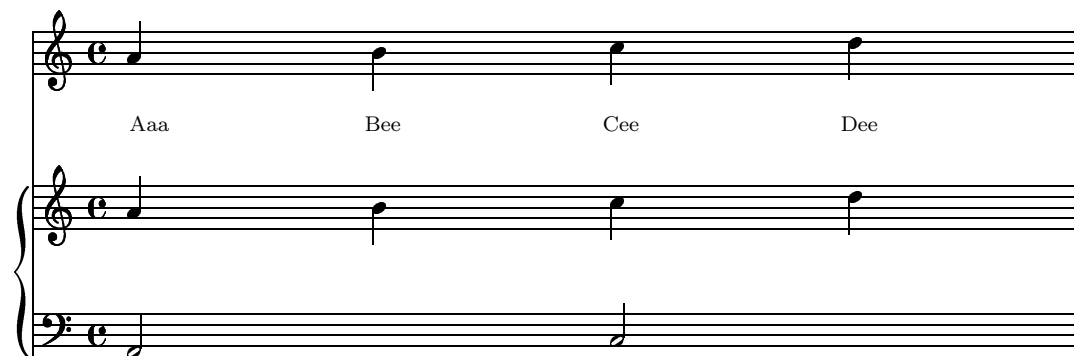
template that puts dynamics on a separate line, so it is neatly centered between staves.
'/home/inger/RPM/BUILD/lilypond-1.6.6/input/template/piano-dynamics.ly':



Lyrics between two staves. '/home/inger/RPM/BUILD/lilypond-1.6.6/input/template/piano-lyrics.ly':



Classical song format: one staff with melody and lyrics, and piano accompaniment.
'/home/inger/RPM/BUILD/lilypond-1.6.6/input/template/piano-melody-lyrics.ly':



simple piano music '/home/inger/RPM/BUILD/lilypond-1.6.6/input/template/piano.ly':



Example template for a SATB vocal score. `‘/home/inger/RPM/BUILD/lilypond-1.6.6/input/template/s`

A musical score for SATB voices with lyrics. The score is in common time (C) and consists of four staves: Soprano, Alto, Tenor, and Bass. The lyrics are: "hi hi hi hi" for the Soprano part, "ha ha ha ha" for the Alto part, "hu hu hu hu" for the Tenor part, and "ho ho ho ho" for the Bass part. The melody is simple, with the Soprano part having a slight rise in the third measure. The lyrics are aligned with the notes on each staff.

hi hi hi hi

ha ha ha ha

hu hu hu hu

ho ho ho ho